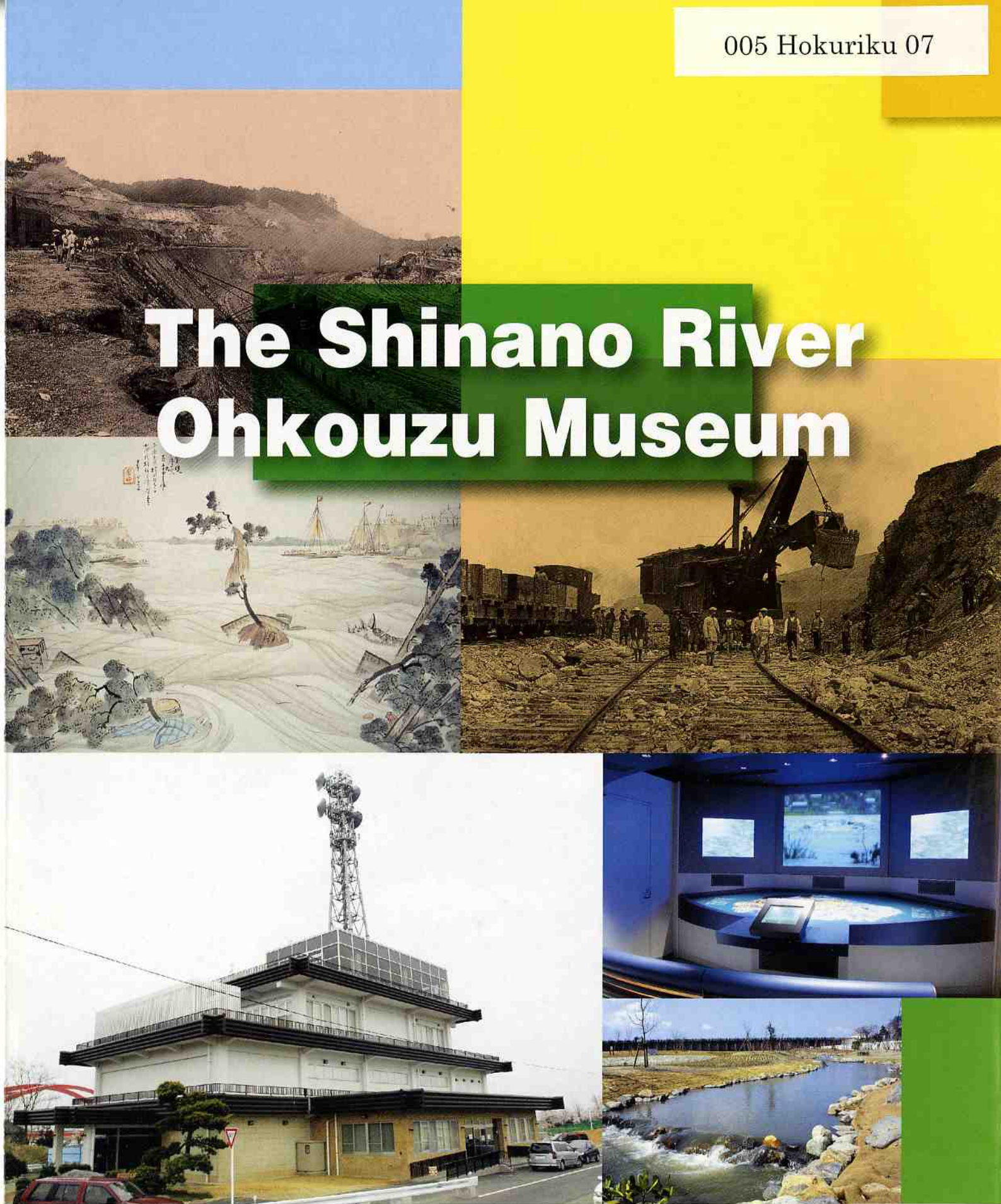


The Shinano River Ohkouzu Museum



The Shinano River Work Office

Hokuriku Regional Development Bureau Ministry of Land, Infrastructure and Transport

Encounter, learn about, investigate and experience the history and role of the Ohkouzu Diversion Channel.

The Ohkouzu Diversion Channel was made by human hands.

The fertile Shinano River created and nourished the vast Echigo Plain. At the same time, however, its floods have washed away countless lives, homes and fields of crops. Since the days of the Edo period, people repeatedly called for the construction of something that would protect people's lives and their livelihoods. This was the Ohkouzu Diversion Channel.

In answer to these wishes and through the hard work of a great many people, the Ohkouzu Diversion Channel was built and at last completed, and it continues to protect the Echigo Plain from flooding to this day.

The purpose of the Shinano River Ohkouzu Museum is to provide a place to encounter, learn about, investigate and experience the history and role of the Ohkouzu Diversion Channel. Take your time here, and enjoy your visit.



On the fourth floor of the renovated Ohkouzu Museum is an observatory offering a view of the beautiful scenery of the Ohkouzu Bunsui area.

The Shinano River Ohkouzu Museum was opened on October 28, 1978 to commemorate the start of channel improvement work on the Shinano River a century earlier in 1876. In order to attract even more visitors and stimulate interest in the Ohkouzu Diversion Channel, the museum was reopened on April 18, 2002 after renovation work to make it more accessible to all (by, for example, adding elevators), while retaining the distinctive appearance as a former government building.

Organization of exhibits



The newly reopened Ohkouzu Museum is designed to be navigated in order from the first floor up through to the fourth floor so as to "encounter", "learn about", "investigate" and "experience" the history and role of the Ohkouzu Diversion Channel.

Museum

- Opening hours : 9:00am - 4:00pm
- Closed : Mondays (or the next non-holiday if Monday is a holiday)
New Year period (December 29 to January 3)
- Admission : Free
- Please contact the museum in advance to arrange group visits or if you wish a guided tour.

New main weir fishway observatories

- Opening hours : 9:00am - 4:00pm
- Opening period : April 1 to November 30 (not open when the museum is closed)
Please contact the museum regarding use during the winter (December 1 to March 31).
- Admission : Free

Friends of Ohkouzu

To increase contact and cooperation with the community and encourage the use of the museum's range of facilities and the development of activities around the Ohkouzu Diversion Channel, the Shinano River Ohkouzu Museum has established a members' association called the Ohkouzu Museum Tomo-no-Kai. For details on joining, please contact:

Shinano River Ohkouzu Museum (Friends of Ohkouzu)

Gosengoku, Bunsui-machi, Nishi-Kanbara-gun Niigata Prefecture 959-0124
Tel : (0256) 97-2195 Fax : (0256) 97-2196

Ohkouzu Branch Office

- The third floor control room, first floor hall and rooftop are open daily to the public (including on holidays).
- The first floor hall may also be booked for public events. Please contact the Ohkouzu Branch Office for details.



| | |
|---------|--|
| Rooftop | Bird's-eye view of the Ohkouzu Diversion Channel |
| 3F | Weir control room |
| 2F | Administration office |
| 1F | Hall to relax and take a break |

Aza Makoike, Oaza Ohkawazu, Bunsui-machi, Nishi-Kanbara-gun, Niigata Prefecture 959-0123
Tel : (0256) 97-2121 Fax : (0256) 97-2202

1F

Encounter and know

On the first floor, you will encounter and learn about the history and role of the Ohkouzu Diversion Channel through exhibits on the origins of the Shinano River and Echigo Plain, the region's climate, and the lives of its people.

3 Role of Ohkouzu Diversion Channel

This area describes what the Ohkouzu Diversion Channel that people sought was, and what led to its construction.



Electric picture show of the Great Yokota Flood of 1896

4 Simulation zone

Experience a simulation of what could occur if there was a major flood and the Ohkouzu Diversion Channel was not there to protect us.



5 Benefits to the Echigo Plain of the Ohkouzu Diversion Channel

Panel display illustrating the benefits and changes to the Echigo Plain arising from the Ohkouzu Diversion Channel.

6 Around the museum

See what conditions are like around the museum in real time.



2 Blessings and curses of the Shinano River

This introduces the origins of the Echigo Plain, and the lives and resourcefulness of the people who lived there amid the threat of floods.



1 Mini-theater

A 40-seat mini-theater with 80-inch screen gives visitors at the start of this zone a brief introduction to the Ohkouzu Diversion Channel.



2F

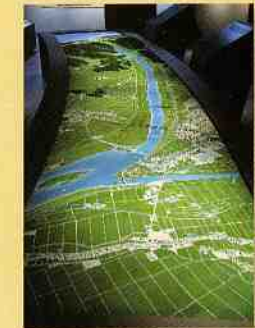
Learn and feel

This zone tells you more about the history and technology of the Ohkouzu Diversion Channel, giving a greater feel of this engineering feat.

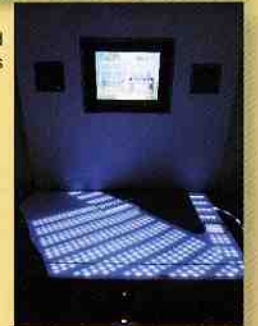
11 Structure of the Ohkouzu Diversion Channel

Here you can find out how the channel protects the Echigo Plain.

How the weirs are operated
Quiz using computer graphics and models on how the channel's weirs are controlled



Model of Ohkouzu Diversion Channel
1/2000th scale model and computer graphics illustrating the construction of the channel



10 The engineers behind the construction of Ohkouzu Diversion Channel

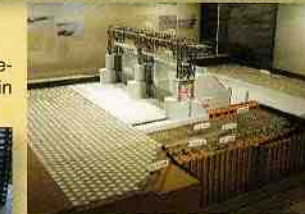
This exhibit introduces the engineers behind the channel's construction.

9 Technology behind the Ohkouzu Diversion Channel

Find out what kind of technology lies behind the channel's construction.

Trolley

Trolley unearthed at the time of reconstruction work on the new main weir in 2000



Model of movable weir
Model of movable weir made by Takenosuke Miyamoto



Model of gates of new main weir
Model illustrating the complexities of the first submerged weir in Japan to have self-propelled hydraulic gates

8 Changes in the Ohkouzu Diversion Channel project

Four plans show how the diversion channel project has changed.



7 Development of the Ohkouzu Diversion Channel

A large timeline display traces the development of the channel since the start of the Meiji period in 1868 down to the present day.

12 Special exhibition zone

All kinds of special exhibitions on themes such as the Ohkouzu Diversion Channel will be held here.

13 Multipurpose hall

Equipped with a 100-inch screen and video facilities and capable of seating 80 people, this hall is suitable for a variety of uses, including lectures and workshops.

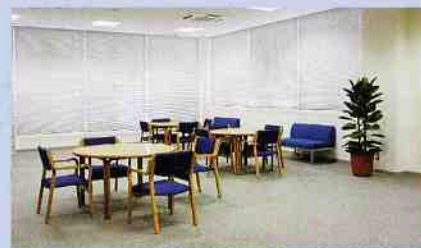
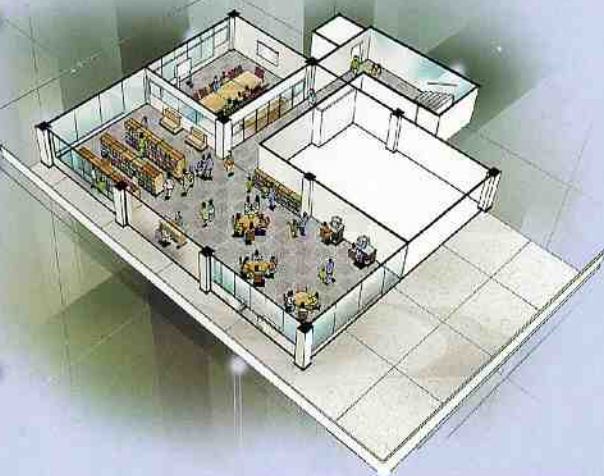


3F

Library

A library where you can read books and other materials about the Shinano River and Ohkouzu Diversion Channel.

Investigate and communicate

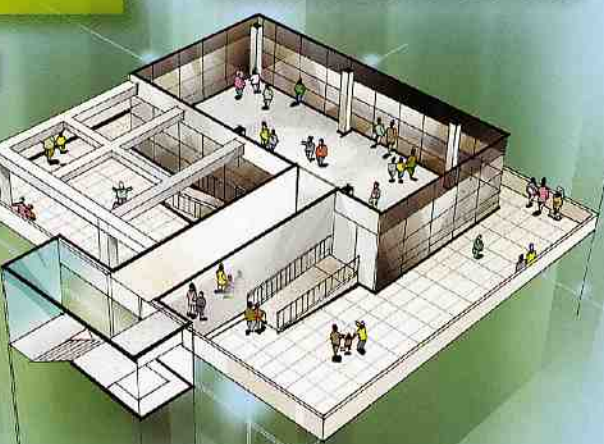


4F

Observatory

This observatory offers a grand view of the Shinano River and Ohkouzu Distribution Channel whatever the weather.

Experience



Ohkouzu Bunsui Park

Ohkouzu Bunsui Park was established in 1924 to commemorate the opening of the Ohkouzu Diversion Channel.

80 years later in 2002, when the main weir was rebuilt, it was combined with the Shinano River Ohkouzu Museum to create a place where people could learn all about the Shinano River and the Ohkouzu Diversion Channel, and also relax and enjoy the sights and scenery all year round, such as the cherry blossom in spring, the cool evening breeze in the summer, salmon swimming upstream in autumn, and swans in winter.

7 Ohkouzu Branch Office

Visitors to the branch office can see the Ohkouzu Diversion Channel being controlled and also enjoy the view from the rooftop.



8 New main weir

New main weir that entered operation on May 29, 2000. The gates are hydraulically operated.



9 Fishway observatories

Observatories for watching the various kinds of fish that inhabit the Shinano River valley.



10 Wando

Wando is a bay-shaped area of gently flowing water. It is used as a breeding ground and shelter by a wide variety of wildlife, which can be observed here.



6 Main weir (registered national tangible cultural property)

Main weir that has protected the Echigo Plain for 80 years. Registered as a national tangible cultural property on February 14, 2000.



5 Nishikawa River water transmission sluice gate

Source of the Nishi River flowing to Nishi-Kanbara and Niigata. Also conveys water to the Sesaragi Channel.



4 Movable weir

A then state-of-the-art movable wear completed in 1931.



3 Remains of diversion weir

The preserved remains of the abutments of the diversion weir that suddenly subsided on June 24, 1927.

2 Monument commemorating the completion of repair work on the Shinano River

Erected in 1931, the inscriptions on this monument, written by Akira Aoyama, read "Blessed are those who find the will of heaven in all things in the universe." and "For the benefit of humankind and for the benefit of the motherland."



1 Shinano River flood control monument

The inscription on this huge monument erected in 1924 was penned by the well-known calligrapher Tenrai Hidai.



11 Multipurpose square

Grassy square created on land reclaimed from the river downstream of the new main weir.



12 Play Channel

Channel for splashing around in the Shinano River.



13 Eco-learning Channel

Manmade river designed to bring the natural world of Shinano River closer to home. Visitors can see underwater from an upstream observation window.





Getting here



Getting to the museum

●Train

5 min. by car from Bunsui Station on the JR Echigo line

20 min. by car from Tsubame Sanjo Station on the Shinkansen line

●Bus

10 min. on foot from Echigo Kotsu "Koen Iriguchi" bus stop

●Car

5 min. by car from Highway 116 Gosengoku intersection

20 min. by car from Hokuiku Expressway Nakanoshima Mitsuke Interchange

20 min. by car from Hokuiku Expressway Sanjo Tsubame Interchange



Museum website

Visit the museum's regularly updated website

at : URL <http://ohkouzu.jp>

Please feel free to contact the following address if you require further information or have any other comments or questions:

The Shinano River Ohkouzu Museum

Gosengoku, Bunsui-machi, Nishi-Kanbara-gun, Niigata Prefecture 959-0124

TEL (0256) 97-2195 FAX (0256) 97-2196

URL <http://ohkouzu.jp>

E-mail : info@ohkouzu.jp

Published by The Shinano River Work Office

Hokuriku Regional Development Bureau

Ministry of Land, Infrastructure and Transport

1-5-30 Shinano, Nagaoka-shi, Niigata Prefecture 940-0098

TEL (0258) 32-3020 FAX (0258) 34-9044

URL <http://www.hrr.mlit.go.jp/shinano/>

E-mail : shinano@hrr.mlit.go.jp